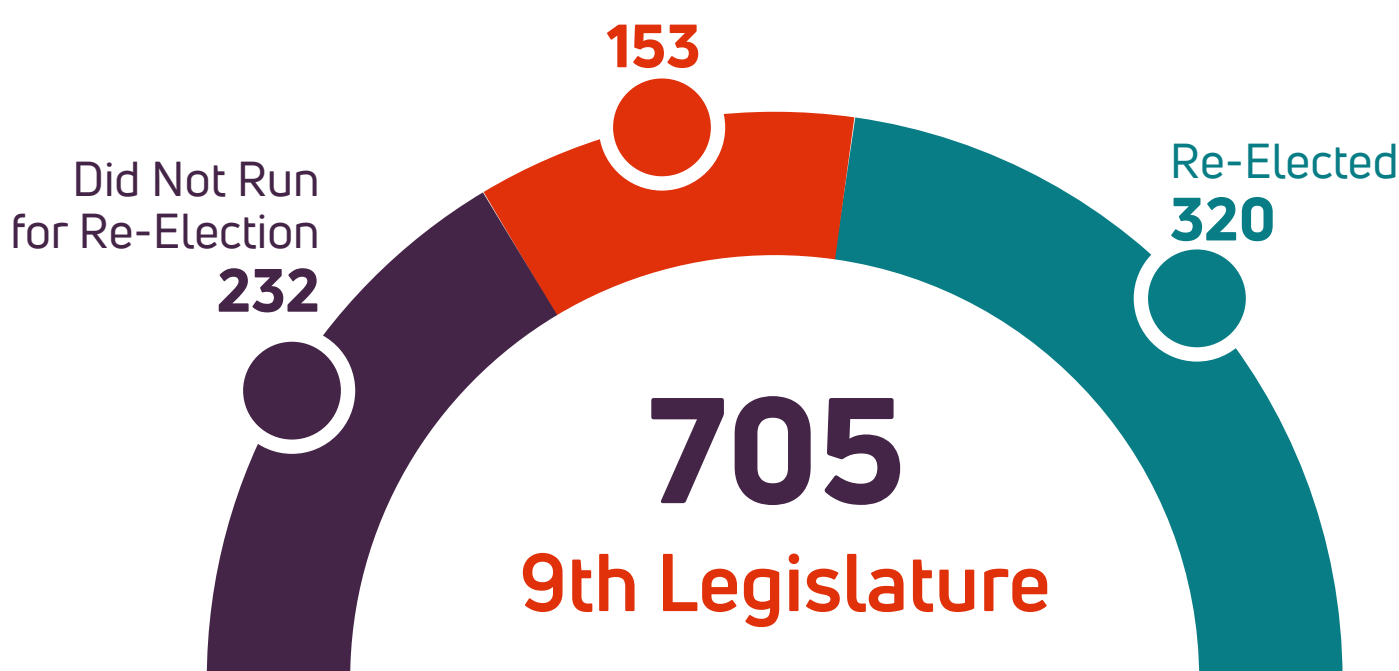


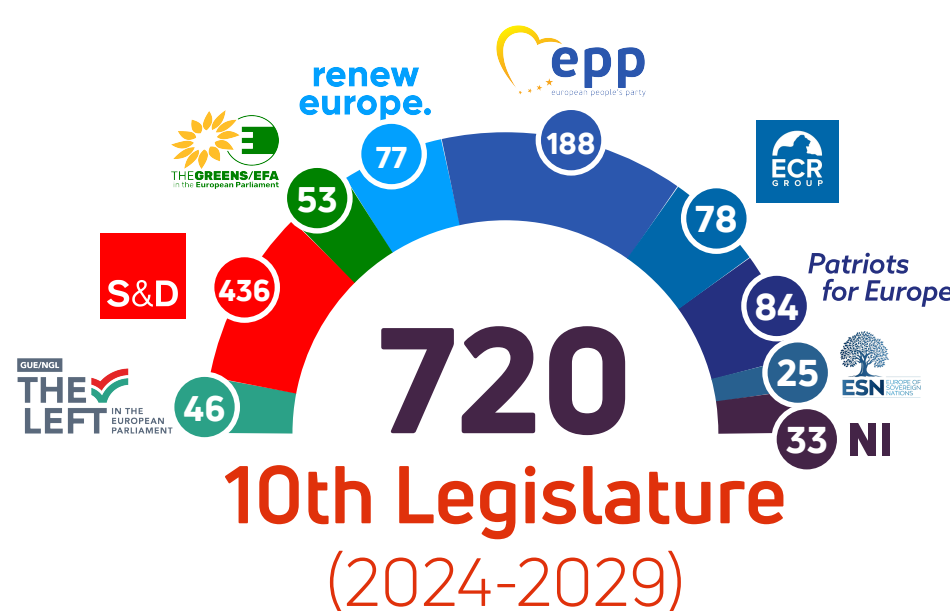
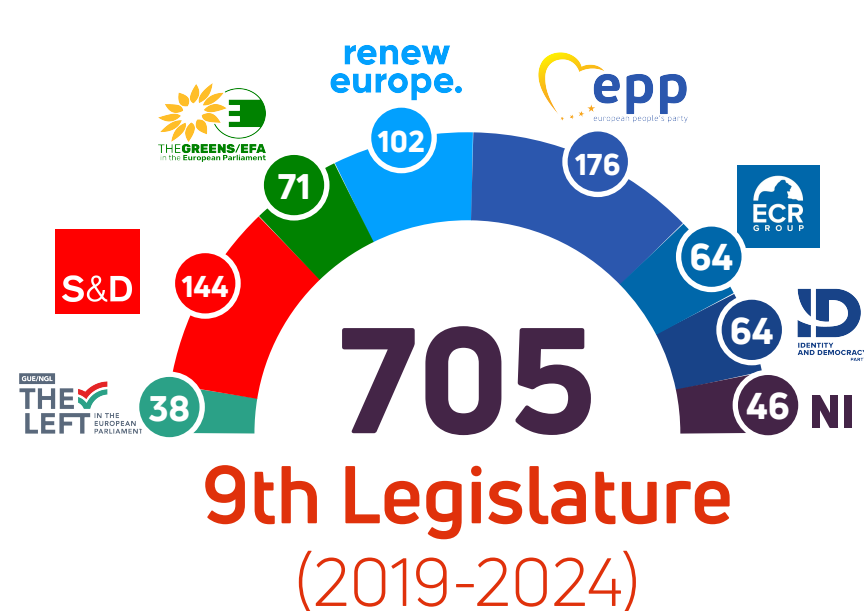
# 2024 EU Post-Election Overview

Even though the European elections ran from June 6-9, 2024, the formal election and appointment process is conducted over six months. Stay connected with EU Issue Tracker as we cover every phase of forming the new European Parliament, electing the new President of the European Commission, and appointing the College of Commissioners, representing roughly 500 million people across the EU.

## EU ELECTIONS RESULTS



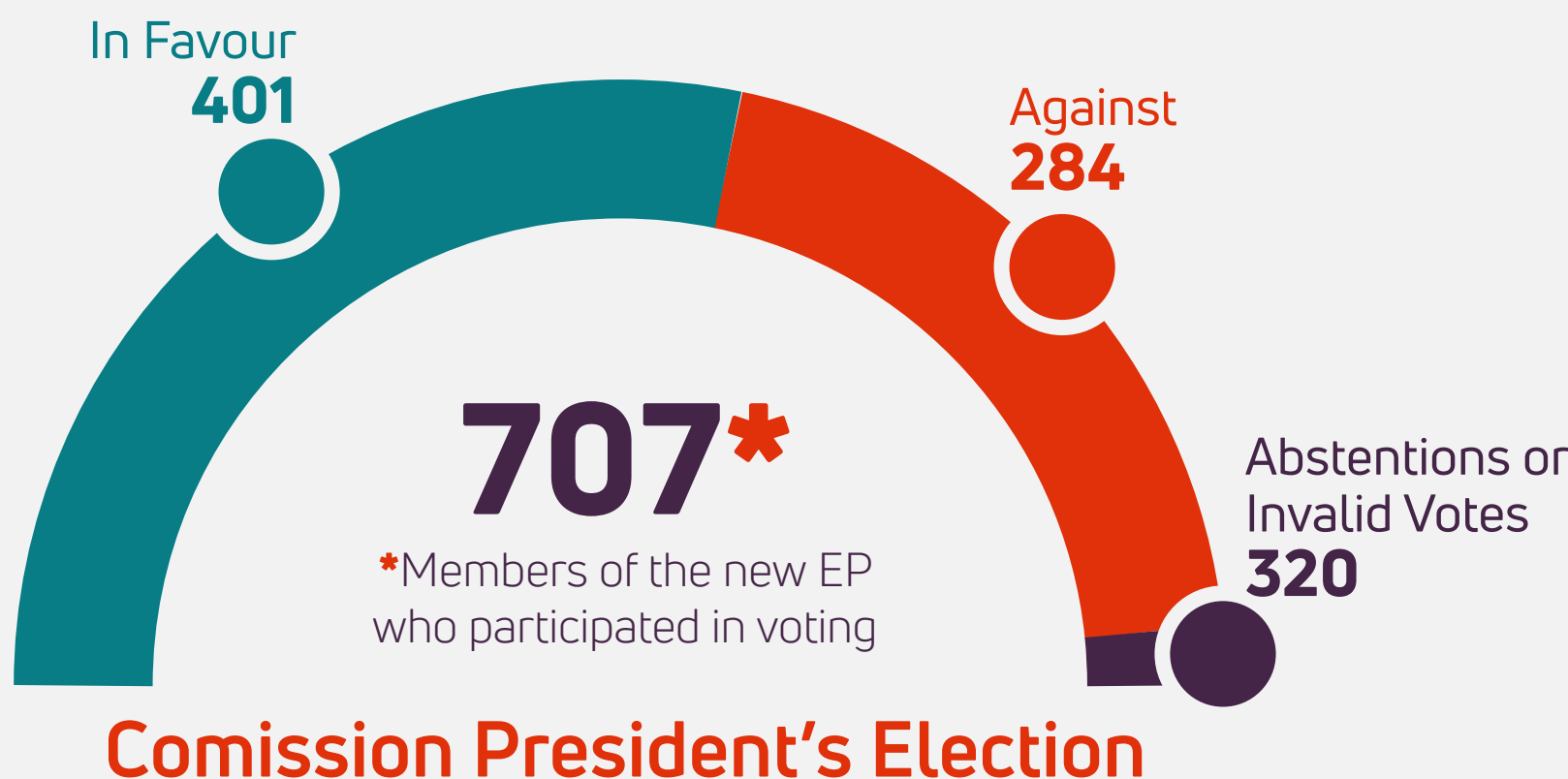
Following the 6-9 June 2024 elections, the new European Parliament (10th Legislature) is now composed of 720 MEPs, as numbers were rebalanced to account for demographic changes in the EU since 2019.



Turnover of MEPs was also quite significant at 54 per cent. Of the 385 MEPs not returning, 153 were not re-elected, and 23 — almost a third of MEPs — chose not to stand for re-election.

## COMMISSION PRESIDENT'S CONFIRMATION

Following a vote on 18 July, the plenary of the new European Parliament re-elected Ursula von der Leyen (lead candidate of the EPP) for a second five-year term as European Commission president. The result was well above the 361 votes needed for von der Leyen to win a second term.



## COMMISSION PRESIDENT POLITICAL GUIDELINES

Von der Leyen presented her political guidelines for the next five years, they are expected to feed into the next Commission Work Programme. The guidelines are divided into seven sections:



### Key Institutional Developments & EU Elections

### National & Presidential Elections

## SEPTEMBER

- Each Commissioner candidate will go through a series of important hearings by the Parliament's Committees
- Mid-September**  
The President of the European Commission delivers her State of the Union address before the European Parliament, setting out her political priorities for the year ahead.
- 29 - Austria - Parliamentary Election**

## OCTOBER

- Confirmation of the new College of the Commission
- 13-27 - Lithuania - Parliamentary Election**
- Mid-October**  
The Commission adopts its annual work programme and presents it to the European Parliament and other institutional partners.
- 31 - Current Commission's term ends**

## NOVEMBER

- 1** - The European Council is expected to adopt its decision, the new President is confirmed and begins their term
- 1** - Target date for new Commission to take office after confirmation by the Parliament in October
- 24 - Romania - Presidential Election**

## DECEMBER

- 1 - Romania - Parliamentary Election**
- 1** - The new President of the European Council takes office
- Croatia - Presidential Election**